

# LOOKBOOK AW21

WELCOME TO SALMING UNDERWEAR



All our news are presented on our website [www.salmingunderwear.com](http://www.salmingunderwear.com)

Follow us on [www.facebook.com/SalmingUnderwear](https://www.facebook.com/SalmingUnderwear)

and [instagram.com/salmingunderwear/](https://www.instagram.com/salmingunderwear/)

## SALMING.

no nonsense.

# SALMING HIGH PERFORMANCE

MAN



High Performance is produced in materials with high function to make your performance outstanding.

**COOLMAX®** fabric is the performance fabric that includes an effective fibre based moisture management system.

All Performance boxer have a Wide Quick Dry elastic waistband with woven logo all around.

The mesh panels are placed for optimum sweat transportation and for keeping you dry and fit. Machine wash 40 degrees.



2-P

## PERFORMANCE COTTON



**912221 EVERLASTING**  
**MODEL** 2-pack boxer • 4 cm  
**MATERIAL** 57% Co • 38% Pe • 5% EL  
**SIZE** S-XXL  
**COLOR** 218 Grey/Printed + Solid Black  
**DELIVERY** Running item



## MESH

## PRINTED SPORT PERFORMANCE



**912109 ENERGY**  
**MODEL** Long boxer • 10 cm  
**MATERIAL** 82% Pe • 18% EL  
**SIZE** S-XL  
**COLOR** 020 Black  
**DELIVERY** Running item





COOLMAX\*

### EXTRA LONG LEG

#### 912106 RECORD

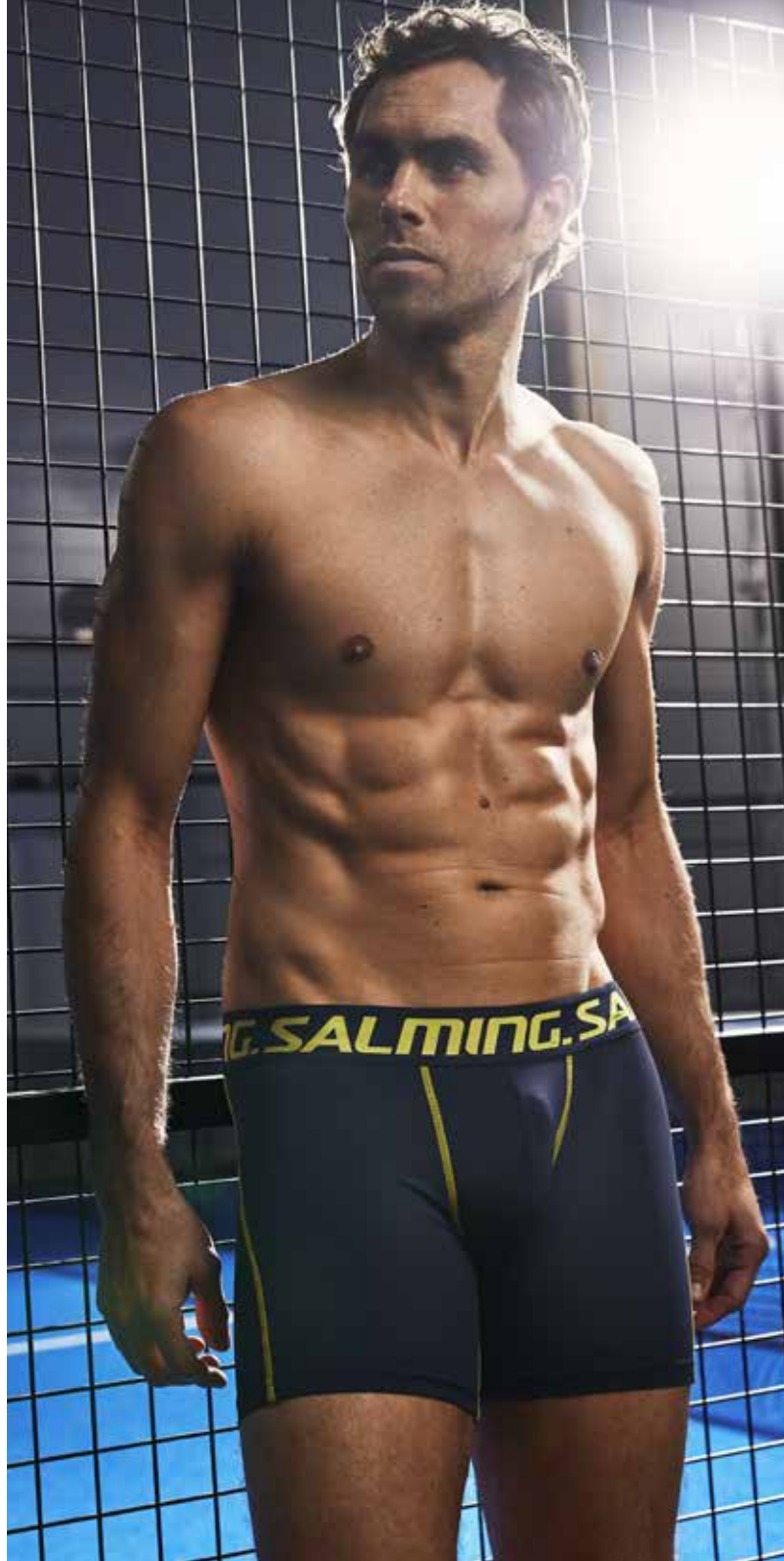
**MODEL** Extra long boxer • 12 cm  
**MATERIAL** 85% Pe • 15% Ea • Coolmax  
**SIZE** S-XL  
**COLOR** 018 Grey • 075 Blue • 079 Navy • 020 Black  
**DELIVERY** Running item

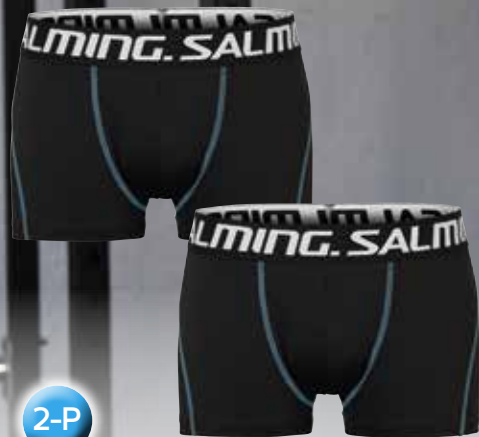


COOLMAX\*

#### 912110 DAWSON

**MODEL** Extra long boxer • 11 cm  
**MATERIAL** 85% Pe • 15% Ea • Coolmax  
**SIZE** S-XL  
**COLOR** 049 Wine  
**DELIVERY** Running item





2-P

**912223 MOTION**

**MODEL** 2-pack boxer • 4 cm  
**MATERIAL** 85% Pe • 15 % El • Micro fibre Coolfeel  
**SIZE** S-XL  
**COLOR** 020 Black  
**DELIVERY** Running item



FROM XXS



**912108 ONGOING**

**MODEL** Extra long boxer • 11 cm  
**MATERIAL** 85% Pe • 15 % El • Micro fibre Coolfeel  
**SIZE** XXS-XL  
**COLOR** 020 Black • 070 Cyan  
**DELIVERY** Running item



**912009 SQUAT**

**MODEL** Boxer • 4 cm  
**MATERIAL** 85% Pe • 15 % El  
 Micro fibre Coolfeel  
**SIZE** S-XL  
**COLOR** 218 Black/Grey  
**DELIVERY** Running item

High comfort and quick-drying wide elastic waist with woven logo and lined front.



# SALMING PERFORMANCE

MAN



Bamboo fabric has a natural sheen and softness that feels and drapes like silk but is less expensive and more durable.

Bamboo is naturally anti-bacterial and anti-fungal supposedly because of a bacteriostatic agent unique to bamboo plants called "bamboo kun" which also helps bamboo resist more harboring odors than cotton and doesn't need artificial irrigation.

Bamboo is highly absorbent and wicks water away from the body 3 to 4 times faster than cotton.

The structure of bamboo fibers make bamboo fabrics more breathable and thermal regulating than cotton, hemp, wool or synthetic fabrics.

NEWS • NEWS • NEWS • NEWS



2-P

**817264 STONE**

**MODEL** 2-pack long boxer • 8 cm  
**MATERIAL** 95% Co • 5% El  
**SIZE** S-XXL  
**COLOR** 218 Black/Grey  
**DELIVERY** Sep



NEWS • NEWS • NEWS • NEWS



2-P



**817282 RULE**

**MODEL** 2-pack long boxer • 8 cm  
**MATERIAL** 62% Bambo • 34% Co • 4% El  
**SIZE** S-XL  
**COLOR** 797 Blue/printed + solid blue  
**DELIVERY** Sep

NEWS • NEWS • NEWS • NEWS



2-P



2-P

**817295 LIGHT**

**MODEL** 2-pack boxer • 4 cm  
**MATERIAL** 95% Co • 5% El  
**SIZE** S-XL  
**COLOR** 218 Grey/black/printed + solid black  
797 Blue/printed + solid navy  
**DELIVERY** Sep





2-P

**817273 SPINE**

**MODEL** 2-pack boxer • 4 cm  
**MATERIAL** 95% Co • 5% El  
**SIZE** S-XXL  
**COLOR** 434 Wine/orange • 707 Blue/Blue  
**DELIVERY** Running item



3-P

**817374 VERVE**

**MODEL** 3-pack boxer • 4 cm  
**MATERIAL** 95% Co • 5% El  
**SIZE** M-XL  
**COLOR** 218 Grey/black/printed + solid black  
 797 Blue/printed + solid navy  
**DELIVERY** Running item



2-P

**817275 SKILL**

**MODEL** 2-pack long boxer • 8 cm  
**MATERIAL** 95% Co • 5% El  
**SIZE** S-XL  
**COLOR** 207 Black/Cyan  
**DELIVERY** Running item

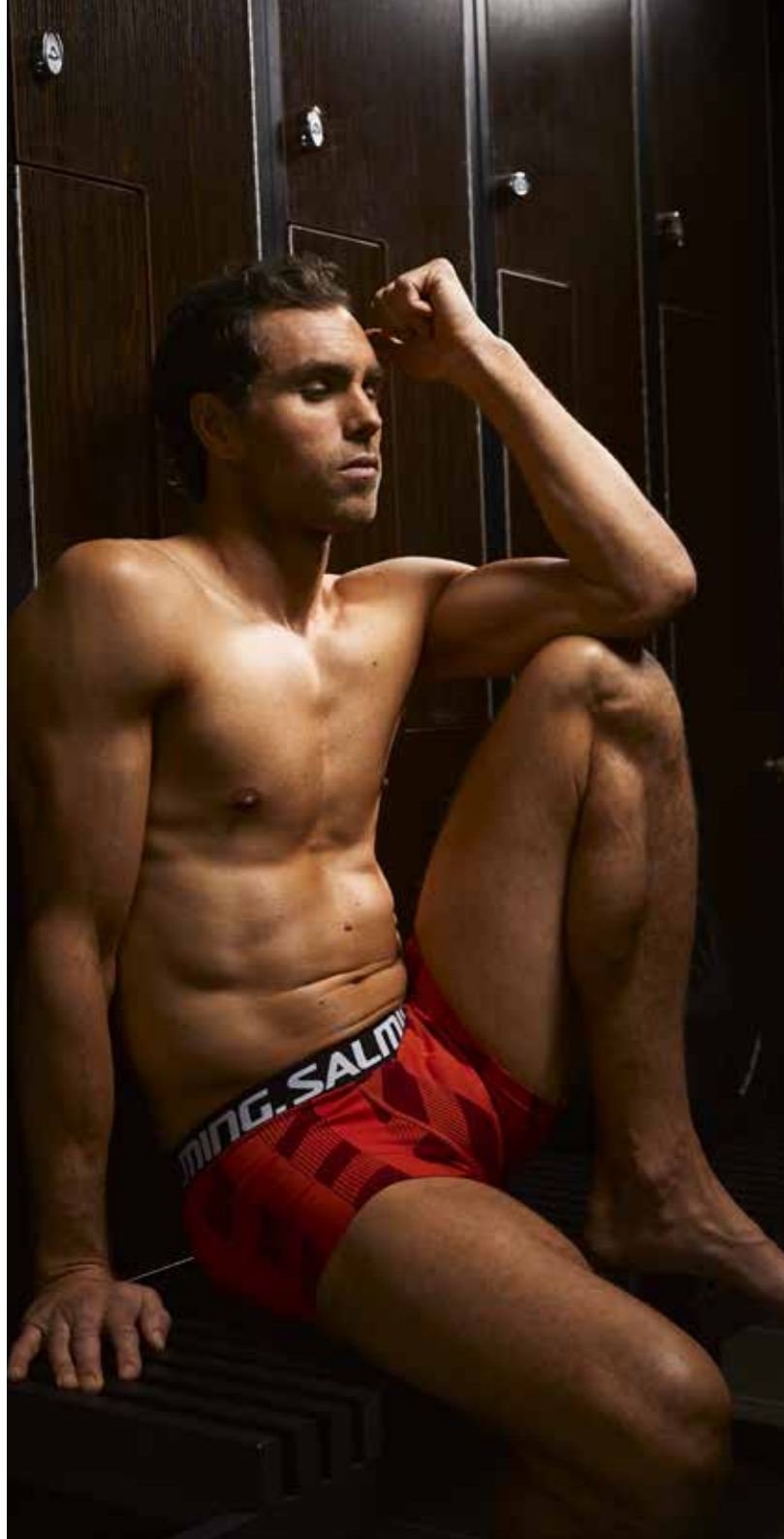


2-P

**817265 KENT**

**MODEL** 2-pack boxer, 4 cm  
**MATERIAL** 95% Co, 5% El  
**SIZE** S-XXL  
**COLOR** 207 Black/Cyan  
**DELIVERY** Running item

Soft and comfortable cotton quality, elastic waist with woven logo and lined front.



2-P

### 817263 STREAM

**MODEL** 2-pack Boxer, 4 cm  
**MATERIAL** 95% Co, 5% EL  
**SIZE** S-XL  
**COLOR** 084 Aqua  
**DELIVERY** Running item

Soft and comfortable cotton quality, elastic waist with woven logo and lined front.



FROM XXS



2-P

### 817297 PIPE

**MODEL** 2-pack boxer • 4 cm  
**MATERIAL** 95% Co • 5% EL  
**SIZE** 204 XXS-XL • 797 S-XL  
**COLOR** 204 Red/black • 797 Navy/Cyan  
**DELIVERY** Running item







**817310 ABISKO**

**MODEL** 3-pack boxer • 4 cm  
**MATERIAL** 95% Co • 5% El  
**SIZE** S-XXL  
**COLOR** 020 Black • 779 Blue/light blue/navy  
**DELIVERY** Running item

Soft and comfortable cotton quality, elastic waist with woven logo and lined front.







5-P

**817501 BOX**

**MODEL** 5-pack Boxer • 4 cm  
**MATERIAL** 95% Co • 5% El  
**SIZE** S-XXL  
**COLOR** 274 Black/Grey/Navy/Blue/Red  
**DELIVERY** Running item  
Soft and comfortable cotton quality, elastic waist with woven logo and lined front.





Bamboo fabric has a natural sheen and softness that feels and drapes like silk but is less expensive and more durable.

Bamboo is naturally anti-bacterial and anti-fungal supposedly because of a bacteriostatic agent unique to bamboo plants called “bamboo kun” which also helps bamboo resist more harboring odors than cotton and doesn’t need artificial irrigation.

Bamboo is highly absorbent and wicks water away from the body 3 to 4 times faster than cotton.

The structure of bamboo fibers make bamboo fabrics more breathable and thermal regulating than cotton, hemp, wool or synthetic fabrics.



OEKO-TEX®  
CONFIDENCE IN TEXTILES  
STANDARD 100  
Tested for harmful substances  
www.oeko-tex.com/standard100



**817268 ANDREW**

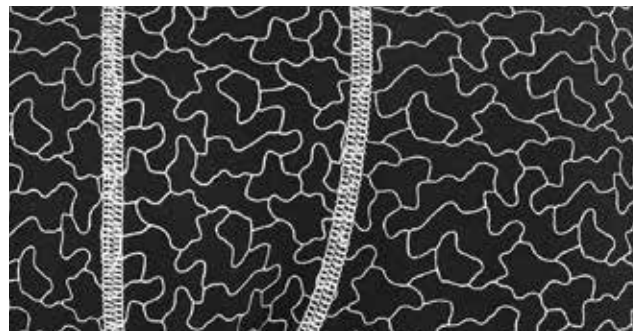
**MODEL** 2-pack boxer, 4 cm  
**MATERIAL** 62% Bamboo, 34% Co, 4% EL  
**SIZE** S-XL  
**COLOR** 808 Green/light green  
**DELIVERY** Running item

Soft and comfortable bamboo material. Underpants with soft elastic waist and woven Salming logo.



**817287 STEEL**

**MODEL** 2-pack boxer • 4 cm  
**MATERIAL** 62% Bamboo • 34% Co • 4% EL  
**SIZE** S-XL  
**COLOR** 020 Black/printed + solid black  
**DELIVERY** Running item



**817278 FREE**

**MODEL** 2-pack long boxer • 8 cm  
**MATERIAL** 62% Bamboo • 34% Co • 4% EL  
**SIZE** S-XL  
**COLOR** 479 Red/printed + solid navy  
**DELIVERY** Running item







2-P

Bamboo

**817251 FREELAND**

**MODEL** 2-pack boxer • 4 cm  
**MATERIAL** 62% Bamboo • 34% Co • 4% EL  
**SIZE** S-XL  
**COLOR** 207 Solid Black + Solid Blue  
**DELIVERY** Running item

Soft and comfortable Bamboo quality, elastic waist with woven logo and lined front.



2-P

Bamboo

**817272 KEEN**

**MODEL** 2-pack long boxer • 8 cm  
**MATERIAL** 62% Bamboo • 34% Co • 4% EL  
**SIZE** S-XL  
**COLOR** 218 Black/Grey  
**DELIVERY** Running item



2-P

Bamboo

**817271 SPIRIT**

**MODEL** 2-pack boxer • 4 cm  
**MATERIAL** 62% Bamboo • 34% Co • 4% EL  
**SIZE** S-XXL  
**COLOR** 808 Green/Printed  
**DELIVERY** Running item

